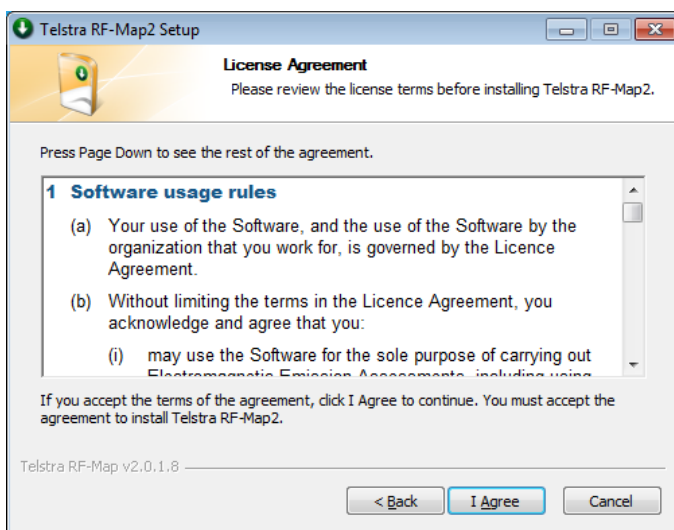


Table of Contents

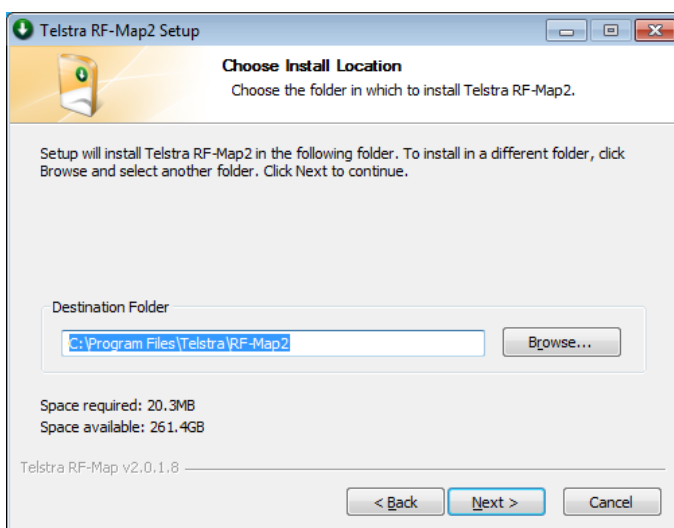
RF-Map v2 First time installation	1
RF-Map v2 Update	4
Database configuration.....	5

RF-Map v2 First time installation

- Run installation package (RF-Map-2.x.x.x_setup.exe)
- Click next on first screen

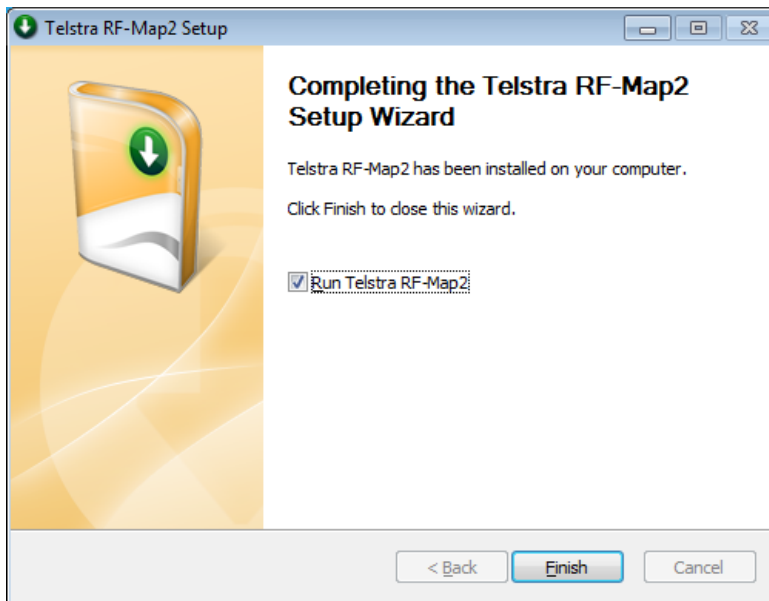


- Click "I Agree" on Licensing Agreement screen



- Leave the default installation directory (C:\Program Files\Telstra\RF-Map2) and click next
- Finally click "Install"

After the install completes you should see this screen.



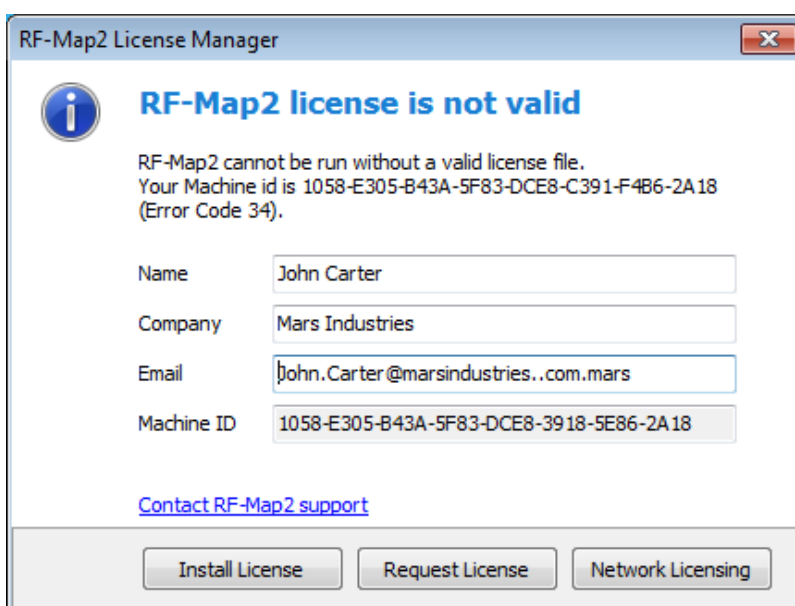
- Make sure "Run Telstra RF-Map2 " is ticked and click "Finish"

You will be presented with a licensing screen.

Select "Install License" you have already requested and received a license.

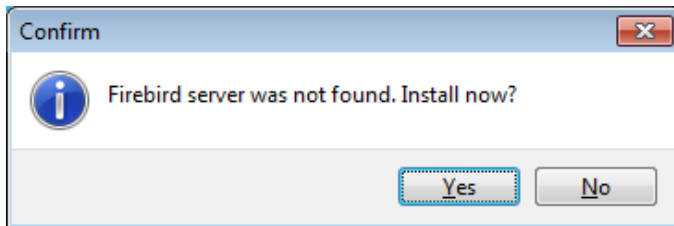
Select "Request License" if you would like to purchase an RF-Map license

Select "Network Licensing" if your company hosts a network licensing server.



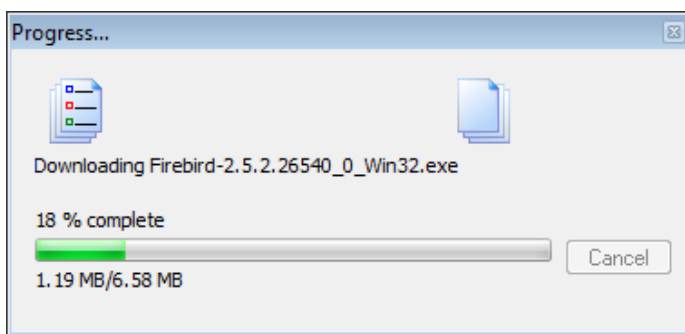
After successful selection of your preferred licensing option RF-Map will start.

If you haven't previously installed Firebird Database Server you will be presented with the following screen.



- Click "Yes"

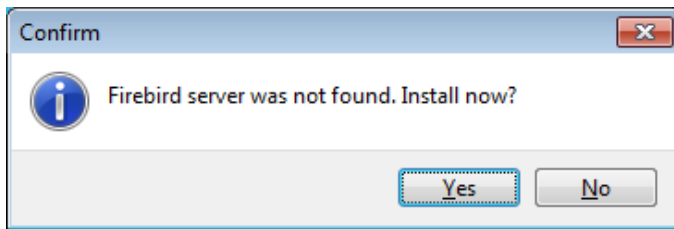
The Firebird installation package will be downloaded and installed.



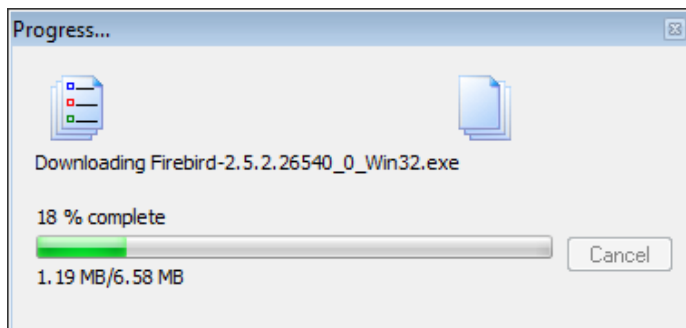
RF-Map v2 Update

Follow the update process as usual.

Run RF-Map and you will be presented with the following screen.

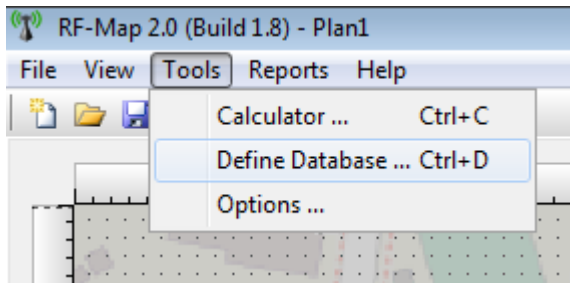


- Click "Yes"
- The Firebird installation package will be downloaded and installed.

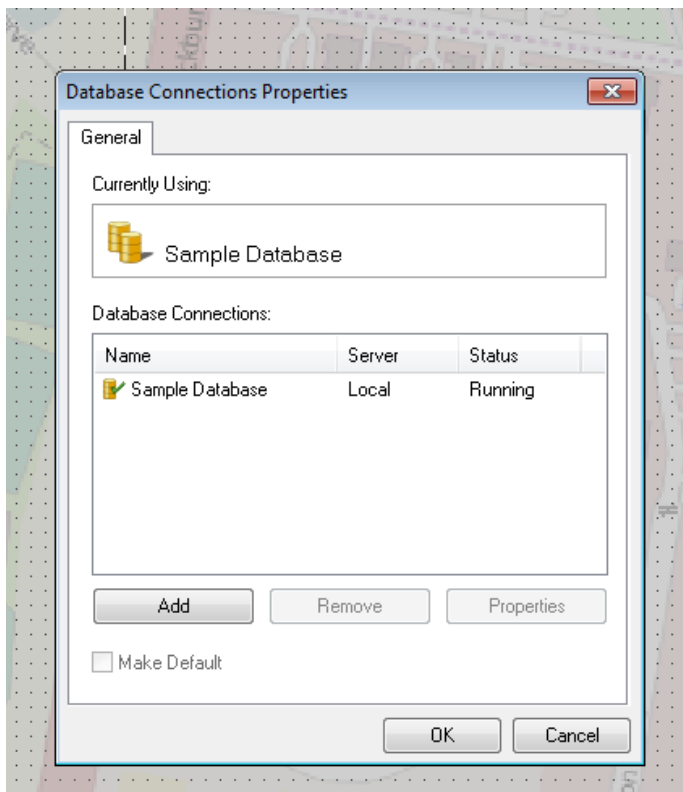


Database configuration

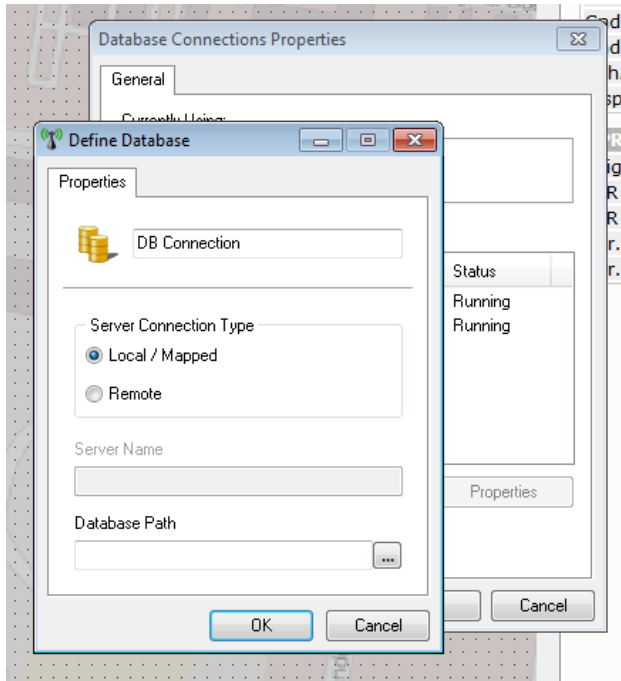
- Run RF-Map
- Select “Tools” followed by “Define Database...”



- You will be presented with a “Database Connections Properties” screen. RF-Map v2 installation comes with a Sample Database containing one antenna as per screenshot below.



- Click “Add”



- Select database Server Connection Type

“Local / Mapped” for a local database server.

- Enter Database Path or Click “...” and browse for file.

“Remote” if your company is using a central database server

- Enter Server Name
- Enter Database Path

After you click “ok” the connection will be verified and selected if successful.

- Select the Database connection you’ve just added and click “Make Default”

